

vitris
Glass fittings with logic

secura



vitris secura

Secura is a high security cylinder lock for glass sliding doors. Its patented design provides maximum security and protection against manipulation: no horizontal pushing apart, no pushing out and no lifting of the sashes anymore. Its modular system consists of a high security cylinder lock in the front sash, an adapter in the rear sash and an interchangeable cylinder core which can be either supplied to pass or to differ. Its assembly is as fast as it is simple. Lock and adapter have been coordinated with the runner profile in design and surface specification. When combined with the Vitris profiles, aesthetically discerning complete solutions for interior furnishings can be realised.

1 The dimensions and design of the finger pull handle, adapter and lock are coordinated with the Vitris runner profile and make for an aesthetically pleasing overall appearance.

2 The Secura security cylinder glass door lock at an ergonomic height provides for greatest security and prevents the glass doors from being pushed apart half-way up the sash.

3 Non-manipulable design
The special design with a knurled surface prevents the lock-housing from being twisted on the sash.

4 The universally usable cylinder core is suitable for all Secura lock types. Can be supplied either to pass or to differ. The cylinder core can be easily substituted with the dismantling key.

5 Security dead bolt mechanism
With the patented Secura dead bolt mechanism, an L-cam in the front sash interlocks with the adapter of the rear sash, thus preventing the sashes from being pushed apart horizontally.

6 Glass door lock with triple function: handle – security – lock in the lower guide.



1 Finger pull handle, adapter and lock



2 Secura security cylinder and glass door lock



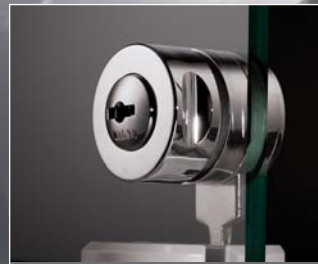
3 Non-manipulable design



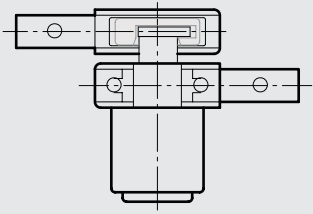
4 Universally usable cylinder core



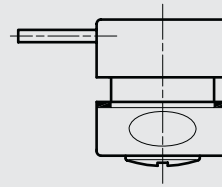
5 Security deadbolt mechanism



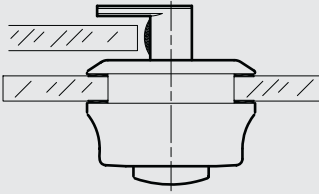
6 Glas door lock



1 4 5 Secura high security cylinder lock



6 Secura glass door lock with locking latch in the lower guide



2 3 Secura security cylinder glass door lock





Willach belongs to the leading producers of glass fittings in Europe. The manufacture of products to the highest quality and precision standards has been the supreme dictum of the company since its establishment in 1889. Numerous technical innovations and intelligent solutions with attention to detail meant that Willach was able to build up its pioneering reputation at an early stage. With the Vitris product line, Willach today offers a comprehensive system of high quality glass

door fittings, sliding door locks and slot bar systems for discerning interior, shop and trade show furnishings. Vitris products are certified in accordance with ISO standards and are manufactured at Willach's Ruppichteroth (Germany) production site to meet stringent manufacturing standards. This forms the basis for the excellent quality and consistently high level of ability of the complete Vitris range.

Gebr. Willach GmbH
Stein 2
D-53809 Ruppichteroth
Germany

Tel.: +49 (0)2295 92 08 0
Fax: +49 (0)2295 92 08 429
info@vitris.eu
www.vitris.eu

Certified ISO 9001 by



The Vitris product range

Vitris Supra: Sliding system for glass thicknesses from 4 to 8 mm

Vitris Penda/Bipenda: Hanging sliding system for glass thicknesses up to 8 mm

Vitris Robustus: Sliding system for glass thicknesses from 8 to 12 mm

Vitris shelving bracket and slot bar system for attractive shelving systems of glass and timber

Vitris Dura/Durus: Sliding system (without roller assembly) for glass sliding doors of 4 – 6 mm glass thickness

Mirror fixing profiles

Glazing profiles: U-profiles, corner profiles, end profiles and central profiles



vitris